

GL8805,8806,8807,8809,8816中性说明书

版本升级到1.4,

更改的地方有:

GL8805的镜头视角从原来的36度改成现在的45度

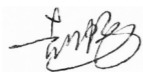
夜视范围从原来的0.5m改成现在的最大15cm等

GL8806最大夜视改成15cm

GL8807最大夜视改成6cm

GL9909最大夜视改成7cm

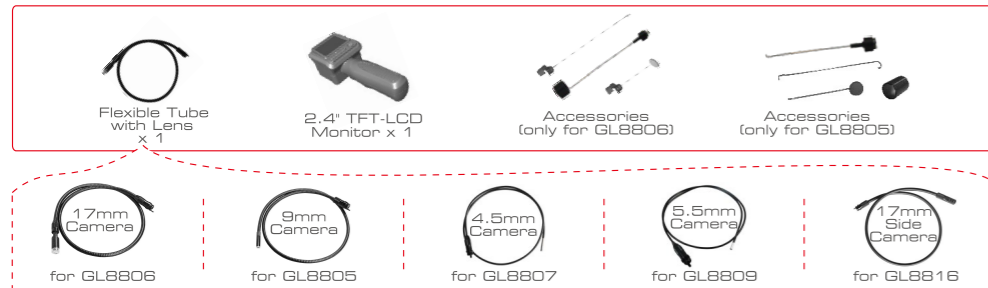
GL8816最大夜视改成7cm

A handwritten signature in black ink, appearing to be 'WMP' or similar, located at the bottom center of the page.

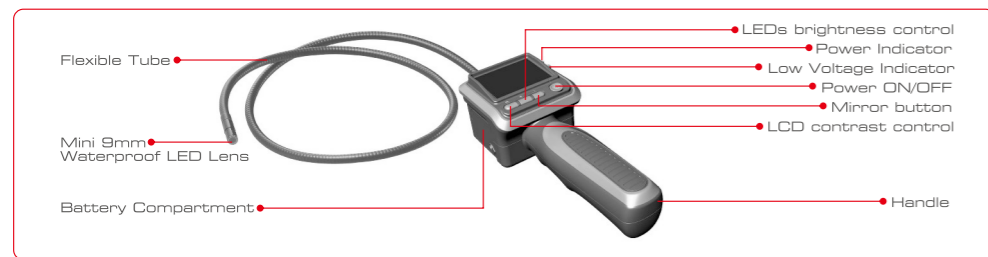
Welcome

Congratulations on your purchase of our inspection video camera with color LCD monitor, The Explorer Compact. Please read the user manual carefully before using this product. This product is designed as a remote inspection device, appropriate for use in surveying pipes or other hard-to-reach places, equipment or furnishing installation, car repair, etc. Features include waterproof LED lens, real-time viewing.

Packing List



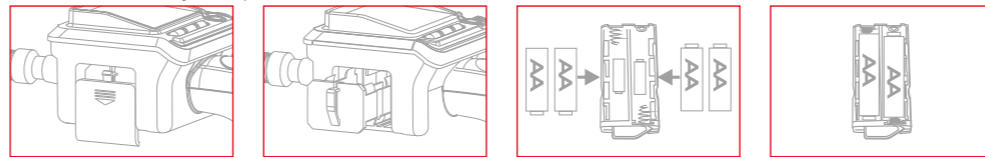
Structure



Installation

To Install Batteries

1. Remove the cover and liberate the battery compartment from its casing;
2. Insert four (4) AA batteries into their appropriate slots, with proper orientation, as indicated on the battery compartment;

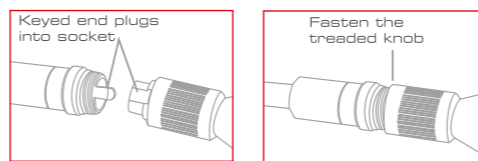


3. Reinstall battery compartment and replace battery cover.

NOTE! Dry your hands before installation or replacing batteries.

To Attach Flexible Tube with Monitor

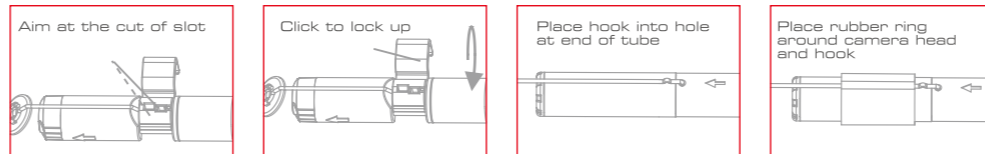
To connect the flexible tube camera with monitor, first make sure that the keyed end of the tube is aligned with the slot in the handle, then use slight force to push them together. Once properly aligned, twist the treaded knob clockwise until the connection is securely in place.



To Install Accessory

The three (3) included accessories (mirror, hook and magnet) are all attached to the tube in the same way as illustrated below:

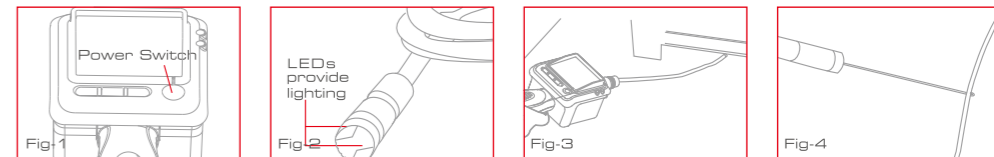
For GL8806:



For GL8806: to prepare accessory for installation, push down on stem-side of black interface while pulling away from adjacent side. This will open the base of the accessory. Next, align inside of stem-side to either treaded surface at the base of camera head. Tighten to secure the accessory in place.

Operation

1. Press the power switch to turn the camera on (refer to Fig-1). The power indicator will illuminate and the LCD will become viewable.
2. If the image on the LCD is unclear, please adjust brightness, contrast and mirror by toggling the buttons on the monitor face.
 - * LEDs Brightness Control: The 6 levels of LED brightness can be adjusted by pressing the LEDs Brightness Control button (refer to Fig-2).
 - * LCD Contrast Control: The 8 levels of LCD contrast may be adjusted by pressing the LCD Contrast Control button.
3. To rotate the orientation of the image displayed on the LCD by 90°, press the Mirror button. There are four (4) possible image orientations that you can toggle through by pressing this button.
4. When in use, the tube should easily maneuver itself into position. Do not apply excessive force (refer to Fig-3).
5. The accessories included with Explorer Compact can be used to retrieve small items like dropped rings or screws (refer to Fig-4).



TIP! The flexible tube can be bent into numerous shapes that may help you explore areas you otherwise thought were impossible to see.

NOTE! Do not immerse the monitor in water. Store in a dry place. Such measures reduce the risk of electric shock and damage. Only the lens and tube are water resistant when the unit is fully assembled.

Specifications

Model No.	GL8805	GL8806	GL8807	GL8809	GL8816
Imaging Sensor	CMOS				
Camera Pixels	640 x 480 (PAL) 640 x 480 (NTSC)	704 x 576 (PAL) 712 x 486 (NTSC)	320 x 240	720 x 525 (NTSC) 720 x 625 (PAL)	640 x 480
Horizontal Viewing Angle	45°	50°	63°	48°	35°
Minimum Illumination	0 Lux				
Maximum Night Vision Range	15cm	15cm	6cm	7cm	7cm
Power Supply	4 x AA batteries				
Tube Diameter	9mm	17mm	4.5mm	5.5mm	17mm
Waterproof Capacity	IP67 (for lens/tube only)				
LCD Screen Type	2.36" TFT-LCD				
Effective Pixels	480 x 234				
Video System	PAL / NTSC				
Consumption Current (Max.)	150mA				
Dimensions (W x D x H)	201 x 83 x 59 (mm)				
Approx. Weight	385g	460g	214g	286g	458g
Operating Temperature	-10°C~50°C/14°F~122°F				
Operating Humidity (Max.)	15~85%RH				

* All specifications are subject to minor change without prior notice.

Warnings

- Turn off the system if it is not in use.
- Attention should be given to the environment aspects of battery disposal.
- Remove the batteries when cleaning the unit.
- Remove the batteries before storing the unit for a long time.
- When necessary, REPLACE ALL FOUR (4) BATTERIES in this unit with new ones, not one (1) or two (2) batteries at a time.
- Use only the size and type of battery specified.
- Be sure to install the battery with the correct polarity as indicated in the battery compartment.
- Properly dispose of the battery. Exposure to high temperatures can cause the battery to explode, so do not dispose of in a fire. Place tape over the terminals to prevent direct contact with other objects. Some countries have regulations concerning battery disposal. Please follow all applicable regulations.

FCC Information

This device complies with part 15 of the FCC Rules. Operation is subject to the following two conditions:
 (1) this device may not cause harmful interference;
 (2) this device must accept any interference received, including interference that may cause undesired operation. Changes or modifications not expressly approved by the party responsible for compliance could void the user's authority to operate the equipment.

EU Environmental Protection

Waste electrical products should not be disposed of with household waste. Please recycle where facilities exist. Check with your local authority or retailer for recycling advice.

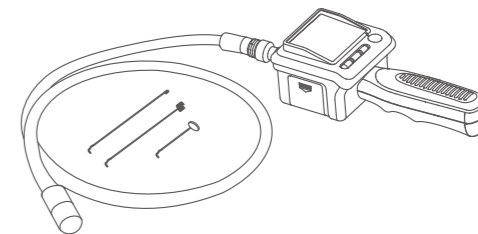


EXPLORER COMPACT

INSPECTION VIDEO CAMERA WITH COLOR LCD MONITOR

Model: GL8805, GL8806, GL8816, GL8807, GL8809

USER MANUAL



Version 1.4

Please read this user manual carefully before using this product. Failure to understand operation procedures may result in injury.